

STONE MERCHANTS - BANKER MASONS - QUARRY OPERATORS

About Us



35⁺

Over 35 highly skilled members of staff

6

6 generations of family heritage in quarrying

£2^m

Current turnover in excess of

An Illustrious History

We are enormously proud of our heritage and marry up over a century of traditional techniques with the pinnacle of modern quarrying and processing machinery. Whilst the company formed officially in 1994, nearly 6 generations of our family tree have contributed to make us the company we are today.

Where We Are & Where We Cover

As the reputation of our own quarried stones has grown we have supplied both Swinton and Hazeldean to London, various locations in Cheshire, Cambridgeshire, Northern Ireland, and to a larger extent The North East of England, The Scottish Borders, The Central Belt, Edinburgh, Glasgow and beyond. We have even supplied to Shetland and The Isle of Skye! Our delivery drivers love a nice drive!

Because we have so many other stones available in addition to our own quarried stones, we are able to match the extreme diversity of the geology all around us.

Our Ethics & Environmental Outlook

Working directly within our environment makes it very easy to want to take full responsibility for it. We are actively reducing our water consumption and employ a heather replanting programme to keep our quarrying impact to an absolute minimum. We are proud to be fully certified for ethical sourcing and sustainability.

As well as our continuing company sustainability program, we also support the local community via our sponsorship of our numerous local football clubs and are also delighted to support community projects and buildings by donating stone and helping with other worthwhile causes. We were very proud to recently win 2 categories in the Herald Scottish Family Business Awards, including Rural Small Business of the Year.

As part of our commitment to Responsible and Ethical Sourcing, we have a number of metrics which we assess our performance against. We are proud to have been one of the first case studies for Stone Federation GB scheme for Ethical Stone Register. We have achieved an independent verification of the metrics we use for our procurement practices and supply chain responsibilities, the amount of CO₂, and our water usage across the site as well as improving our interaction with the local community.



What we do



We provide a complete masonry supply service from our own quarried block to finely finished carving and masonry. Whether you require random walling for your new house, masonry for a sensitive restoration, a bespoke carved fireplace or a sandstone memorial of any description, our team will go out of their way to help you and make the whole process as easy as possible.

Banker Masonry

A full range of all natural stone building products for your project.

Carving & Memorials

Memorials, coats of arms, sculptures, troughs, bespoke gifts, name/date stones etc.

Restoration & Dressing

Full supply service and technical back up for your restoration project.

Delivery

Remote crane, artic or tipper delivery available.

Walling

A full range of coursed and random walling products available.

Paving & Flooring

Numerous riven or sawn paving options available.

Ashlar & Cladding

All stone types available to suit your design requirements and specific project needs.

Fireplaces

A full design process to help you achieve your perfect bespoke design.



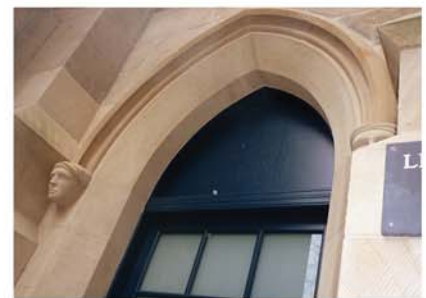


Masonry



Hutton Stone provide a full Banker Masonry (Dressing of Masonry) service. Drawing on our traditional skills of hand dressing combined with modern profiling and lathe machinery we can produce any masonry element required for your project however large or small.

- | | |
|-----------------|--------------------------|
| ■ Sills | ■ Steps & Staircases |
| ■ Lintels | ■ Cornices |
| ■ Copes | ■ Jambs |
| ■ Quoins | ■ Tracery |
| ■ Chimney Caps | ■ Mullions |
| ■ Plinth Course | ■ Any other bespoke work |



We specialise in matching traditional finishes, paying close attention to direction of tooling, chisel size and all the elements that are so important when sympathetically making an addition to an existing building. Shown below are 5 of the most commonly seen dressing styles in Scotland and the North of England.

There are of course many subtle variations on these styles, and we are happy to adapt any style to suit your requirement. Full CAD drawings can be provided of any element within your project for your approval prior to ordering, and we are also able to provide site surveying of your existing stonework at a charge should you require it.



Sparrow Pecked



Broaching



Horizontal Stugged



Diagonal Stugged



Fine Droving



Carving



Memorials

All our headstones are bespoke designed and carved by hand.

We will work closely with you to understand your wishes and involve you in all stages of the work.



Signs, Plaques & Other Lettering

Memorial plaques and signs can be commissioned to commemorate a range of occasions, to mark an opening, a place, a historic event or a faded inscription can be brought back to life. Our lettering is uniquely designed with the client's needs in mind, and can be as simple or elaborate as required.



Heraldry & Carving

From intricately detailed coats of arms, to one-off sculptures to mark a place or event.

Michelle is able to bring her skill and over 25 years of stone carving experience to your special project.



Our Resident Carvers

All of our carving and lettering work is carried out by our Freelance "Artists in Residence" Michelle De Bruin and Josephine Crossland. The ladies can generally be found working on some carved detail, maybe on a bespoke headstone, a crest of arms, a capital or name/date stone – or perhaps Michelle will be found carving a life size wolf, an octopus or a bat's ear for her beloved "Broom Cupboard" collection! Either way, they can always be found producing some truly exquisite work here at Hutton Stone,

along with our fabulous Banker Masons and we are extremely proud to have found a point where the heavy side of quarrying and stone production can sit happily together with creative artistry here at Hutton Stone.

You can visit our website at www.huttonstone.co.uk or Michelle's website at www.artist.org.uk or visit our twitter pages at @huttonstone and @artist.org respectively.



Ashlar, Cladding & Dimension Stone



Our Ashlar, Cladding and Dimension Stone are available in various forms, stone types and quantities. For a competitive quote please contact us with your requirements.





Walling



Hutton Stone have been proud suppliers of the finest quality walling sandstone to some of the most amazing projects throughout the country. We provide random or coursed walling stone in all colours. Standard bed-widths of nominal 100mm and 150mm are most likely to be in stock. We can however produce other thicknesses if required.

Buff Mix



Red/Pink Mix



Standard Walling Finishes Available:

- **Modular:** A selection of sizes which are easy to fit together with sawn top and bottom beds providing a more modern style, akin to traditional squared and snecked walling. Ideal for cavity wall construction.
- **Random:** Our roughly squared walling stone comprises of a great mix of colours and a good range of sizes to give a beautiful rustic finish at economical costs. Ideal for cavity wall construction, boundary walls and landscaping.
- **Unsquared Random Walling:** A great mix of shapes and sizes giving a very rustic finish. 150mm nominal bed-width. Ideal for cavity wall construction, boundary walls and landscaping.
- **Coursed Walling:** Set coursed heights in random lengths, quick to build and suitable for cavity wall construction. Available as either pitched faced or split faced.
- **Quarry Rubble:** Comes exclusively in our Swinton Sandstone, is varied in size. Ideal for boundary walls, garden walls and dry stone dyking.

Custom Work / Stone Matching

We are happy to specify stone type if you are unsure and are trying to match existing. We can do this from samples provided by yourself or a site visit if required. All walling can be supplied loose or bagged /palletted at an additional cost. For advice and guidance on walling for your project please contact us.





A Strathaven New Build - Strathaven - Buff mix walling with Swinton surrounds

B Hutton Stone Project - Buff mix walling stone

C Hawkwell House - Hawkwell Farm - Buff mix walling stone with Blaxter surrounds

D New Build Hepscoth - Hepscoth - Buff mix walling stone with Blaxter surrounds

E Strathaven New Build - Strathaven - Buff mix walling with Swinton surrounds

F New Build Medburn - Medburn - Buff mix walling and Whitton Fell surrounds

G Hawkwell House - Hawkwell Farm - Buff mix walling stone with Blaxter surrounds

H Duddo New Builds - Duddo - Red/Pink walling stone

I Hawkwell House - Hawkwell Farm - Buff mix walling stone with Blaxter surrounds

J Horndean Extension - Horndean - Swinton modular walling with Blaxter surrounds

K Edington House - Chirnside - Red/Pink Mix walling

L Hawkwell House - Hawkwell Farm - Buff mix walling stone with Blaxter surrounds

M Red/Pink walling stone with roughly punched half round copes

N Hawkwell House - Hawkwell Farm Swinton modular stone

O Strathaven New Build - Strathaven - Buff mix walling with Swinton surrounds

Restoration



We have generations of experience in restorative stone masonry and we pride ourselves in paying special attention to the dressing techniques used by those who have gone before us. If you want to match something in a restoration project or you want your new build project to sit perfectly within a traditional environment we are here to help.

Attention is given to the width and shape of tool used, the direction of strike, the depth of strike, the number of strikes per inch – we do this bit in inches – because they did! Most importantly, we consider what the mason was trying to achieve in his working of the stone because unless you consider this, you are missing the point!

Our Restorative Services at a Glance

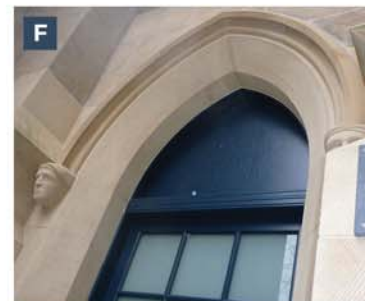
- Matching architectural moulding profiles.
- Matching existing dressing / tooling styles.
- Matching existing stone geologies.
- Stone carving specialists.
- Stone engraving specialists.
- Stonework design service.
- Restorative consultation / advice.

Respectfully Complementing History

Surface dressings have changed over the years. Once upon a time they were applied as simply the quickest cheapest method of getting a surface flat or to provide a good key for lime render to attach to.

As fashions in architecture changed these surface dressings became more formal and refined, for example a broached quoin dressed in the 1700's will be much coarser than one dressed in the late 1800's.





A McEwan Hall - Edinburgh - Witton Fell Sandstone

B Waverley Station - Edinburgh - Scotch Buff Sandstone

C McEwan Hall - Edinburgh - Witton Fell Sandstone

D Old College Quadrangle - University of Edinburgh - Hazeldean Sandstone

E Old College Quadrangle - University of Edinburgh - Hazeldean Sandstone

F Baillifgate Museum - Alnwick Northumberland - Blaxter Sandstone

G McEwan Hall - Edinburgh - Witton Fell Sandstone

H Baillifgate Museum - Alnwick Northumberland - Blaxter Sandstone

I Greenlaw Town Hall - Greenlaw Berwickshire - Swinton Sandstone

J Baillifgate Museum - Alnwick Northumberland - Blaxter Sandstone

K Dirleton Church - Dirleton, East Lothian Hazeldean Sandstone

L Old College Quadrangle - University of Edinburgh - Hazeldean Sandstone

M Stonepath Tower - Stenton East Lothian Corsehill Sandstone

N McEwan Hall - Edinburgh - Witton Fell Sandstone

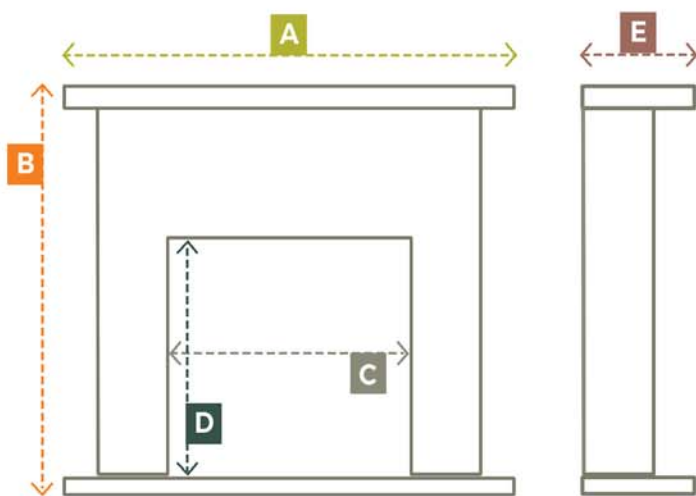
O City Centre Tenements - Edinburgh Swinton Sandstone

Fireplaces



Bespoke Fireplaces - Surprising Prices!

Hutton Stone have produced stunning bespoke fireplaces for decades now and the one thing that people are amazed by - other than the quality of craftsmanship, is the fact that our prices for a bespoke, one off fireplace tend to come in much cheaper than a showroom alternative. Each fireplace can be modified to suit the fire opening and room space. We can match the period of the property and even add personalized dressings like initials or designs etc. We are happy to work from a sketch, photo or idea you provide and we are always on hand to offer advice. You can choose from our many stone types, a colour and texture that you would like.



Fireplaces are priced based upon the cubic meterage of Stone used in their production and the level of complexity of any hand dressing, moulding or carving required.

To aid you in providing the basic dimensions we would need to quote please use the diagram below and complete the fireplace dimensions where possible.

A	B	C	D	E



Period

Choose or match a historical period or opt for modern.



Dimensions

Any size large or small can be created for you.



Dressing/Finish

Add personalized bespoke carvings or dressings.



Stone Type

Choose from our famously large range of stone.



Typical Elizabethan Style



Typical Tudor Style



Typical Edwardian Style

Paving



Paving & Flooring

We currently stock 3 types of stunning imported Indian paving and are delighted to have an established relationship with our supplier that's been going strong for over fifteen years now. Doing so has allowed us to deliver a consistently superior product, and one that we are incredibly proud to put our name to.

We are aware that we could buy it from other cheaper sources but we feel it is important to be confident about the overall quality, its origin, and how it was produced.



Kandla Grey Paving

The Grey paving is a sandstone and has some tonal variation but is generally consistent.



Kota Black Paving

Our Black paving is a limestone and is generally very flat with little variation, very popular for internal flooring and hearths.



Raj Green Paving

The Buff/Green paving is similar to the Grey in that it has tonal variation but is generally consistent.

Hand squared, 22mm - 28mm thick.

All widths 600mm

Available Lengths of 450mm, 600mm, 750mm, 900mm and 1200mm.

(Equates to: 1.8', 2', 2'6", 3' and 4' respectively)

Please note: All dimensions are approximate

The full range of stones we stock can be supplied sawn / dressed for your project, providing you with a vast range of options.

Laying the Paving

The edges of each slab are dressed so that the underside edge is cut back to allow for mortar bedded reasonably tight joints and when they are being dressed the mason selects the flattest face to be the top.

Some customers do prefer to turn the slabs the other way up to give a much more rustic look with larger joints and a more riven texture.



Our Stone



Darney



Hazeldean



Swinton



Swinton (Pink)



Bearl



Blaxter



Cop-Crag



Corsehill



Cove Red



Doddington



Dukes



Elswick Road



High Nick



Locharbriggs



Portland



Scotch Buff



St. Bees



Stripy Blaxter



Wattscliffe



Whitworth Blue



Witton Fell

Please note that due to the fact that stone is a natural product; its colour, density and finish can be variable. As such the stone samples on this page should be treated as for information only purposes. Samples can be ordered through our website as well as getting a chance to view each stone in a wet or saturated state. Our stone range may be subject to change - please see our website for the most up-to-date info.

Our Stone



Common Stone Name	Origin	Colour / Texture	Compressive Strength	Flexural Strength	Porosity	Saturation Coefficient	Water Absorption	Bulk Specific Gravity	
Bearl	Northumberland	Cream / Course	30.47 MPa	4.6 MPa	14.3 %	0.64	4.3% (by wt)	2216 kg/m ³	
Blaxter	Northumberland	Pale yellow / Fine - Med	55.1 MPa	3.1 MPa	20.5 %	0.63	6.1% (by wt)	2110 kg/m ³	
Cop-Crag	Northumberland	Yellow-Orange / Fine	43.23 MPa	3.5 MPa	16.0 %	0.63	-----	2190 kg/m ³	
CorseHill	Dumfries & Galloway	Orange - Red / Fine	67.6 MPa	5.7 MPa	28.8 %	0.66	10.1% (by wt)	1888 kg/m ³	
Cove Red	Dumfries & Galloway	Orange - Red / Fine	81.0 MPa	5.04 MPa	16.8 %	-----	5.3% (by wt)	2034 kg/m ³	
Darney	Northumberland	Pale gold / Fine - Med	60.0 MPa	3.5 MPa	18.7 %	0.60	5.3% (by wt)	2150 kg/m ³	
Doddington	Northumberland	Pink / Fine - Med	51.3 MPa	3.4 MPa	14.8 %	0.63	4.3 - 5.2% (by wt)	2201 kg/m ³	
Dukes	Derbyshire	Pink - lilac / Medium	50 MPa	8.7 MPa	14.11 %	0.67	4.18 % (by wt)	2269 kg/m ³	
Elswick Grey	Northumberland	Grey- Buff / Fine	84.1 MPa	6.0 Mpa	11.66 %	0.59	4.70 % (by wt)	2202 kg/m ³	
Hazeldean	Northumberland	White - cream / fine	101 MPa	5.0 Mpa	14.9 %	0.73	3.9 % (by wt)	2240 kg/m ³	
High Nick	Northumberland	Beige to pale brown	44 MPa	2.1 Mpa	14.7 %	-----	6.0 % (by wt)	2140 kg/m ³	
Locharbriggs	Dumfries & Galloway	Red - pink / Med	44 MPa	2.8 Mpa	26.0 %	-----	9.3% (by wt)	1960 kg/m ³	
Portland	Portland Dorset	Off White / Creamy Buff	41.1 MPa	2.1 Mpa	18.81 %	0.76	6.86% (by wt)	2175 kg/m ³	
Scotch Buff	North Yorkshire	Buff / Fine - Med	75.5 MPa	-----	19.8 %	0.60	5.7 % (by wt)	2130 kg/m ³	
St. Bees	Cumbria	Red / Fine Grained	78 - 100. MPa	8.7 - 9.4 Mpa	18.4 - 19.8 %	0.66	5.6 - 6.2 %	2179 kg/m ³	
Stripy Blaxter	Northumberland	Pale yellow / Fine - Med	55.1 MPa	3.1 MPa	20.5 %	0.63	6.1% (by wt)	2110 kg/m ³	
Swinton	Berwickshire	Buff - Grey / Medium	57 MPa	4.7 MPa	19.0 %	0.65	6.4% (by wt)	2130 kg/m ³	
Swinton(Pink)	Berwickshire	Pink / Medium	57 MPa	4.7 MPa	19.0 %	0.65	6.4% (by wt)	2130 kg/m ³	
Wattscliffe	County Durham	Lilac - Grey / Medium	79.1 MPa	4.8 MPa	12.49 %	0.64	3.44% (by wt)	2312 kg/m ³	
Whitworth Blue	Lancashire	Blue - Grey / Fine	-----	-----	-----	-----	-----	-----	
Witton Fell	Yorkshire	Buff - pink / Fine	42.0 MPa	-----	-----	-----	4.9% (by wt)	2201	

Whilst we have made every effort to ensure the technical information on this page is as accurate and up-to-date as possible, the very nature of natural stone means that the figures above may be subject to change. Please contact us directly if in any doubt.

Swinton

Exclusive to Hutton Stone.



Stone Origin: Berwickshire Sandstone

Typical Aesthetics: Buff / green / grey

Typical Texture: Medium grained

Quarried near Swinton in the Scottish Borders and formerly known as 'Whitsome Newton', the stone is most famously known for its use in the Hall of Honour, Edinburgh Castle.

Compressive Strength:
57 Mpa

Flexural Strength:
4.7

Bulk Density
2130 kg/m³

Saturation Co-efficient:
0.65

Acid Immersion:
Passed ✓

Block Size:
Available up to 3m long x 1m high

Porosity:
19%

Absorption:
6.4%

Geological Type
Lower Carboniferous

Typical Usage:

Swinton quarry produces good clean freestone. Delicate tonal variation. Carves and dresses beautifully. Extensively used historically throughout the Borders, North Northumberland and Scotland.

- ✓ Fine grained.
- ✓ Produces good freestone.
- ✓ Works perfectly for carving.
- ✓ Extensively used throughout the Borders, North Northumberland and Scotland.





Hazeldean

Exclusive to Hutton Stone.



Stone Origin: Northumberland Sandstone
Typical Aesthetics: Light white to cream
Typical Texture: Fine grained

Hazeldean sandstone is quarried near Alnwick in Northumberland, England. Hazeldean Sandstone is both visually and geologically a good match for the no longer available Craigleith Sandstone of Edinburgh.

Compressive Strength:
101 N/mm²

Flexural Strength:
5.0

Bulk Density
2240 kg/m³

Saturation Co-efficient:
0.73

Acid Immersion:
Passed ✓

Block Size:
Available up to 3m long x 1m high

Porosity:
14.9%

Absorption:
3.9%

Geological Type
Lower Carboniferous

Typical Usage:

Hazeldean is a lower carboniferous fine grained white to cream sandstone with natural variations. It is perfect for all architectural masonry building applications including paving. Its colour, strength and texture make it a very suitable match for the historic building stones of Edinburgh and Glasgow.

- ✓ Fine grained.
- ✓ Produces good freestone.
- ✓ Works perfectly for carving.
- ✓ Excellent match for Edinburgh's renowned Craigleith sandstone.







Stone Origin: Northumberland Sandstone

Typical Aesthetics: White /cream >> buff

Typical Texture: Fine to medium grained

Darney sandstone is quarried near Hexham in Northumberland, England. The quarry records for Darney date back to the early 1900's. Darney is a beautiful carboniferous sandstone known for its light gold through to blonde colouration.

Compressive Strength:
68.6 MPa >> 60.0MPa

Flexural Strength:
3.5 MPa

Bulk Density
2150 kg/m³

Saturation Co-efficient:
0.6%

Acid Immersion:
Passed ✓

Block Size:
Please enquire for more info

Porosity:
18.7%

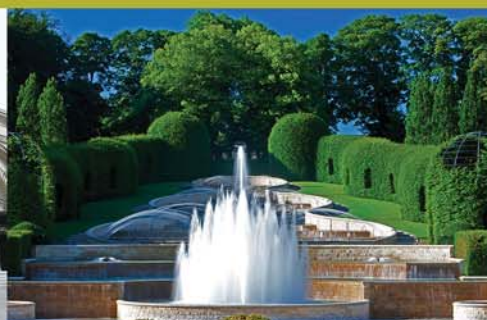
Absorption:
5.3%

Geological Type
Lower Carboniferous

Typical Usage:

Darney sandstone is a lower carboniferous fine grained stone which is a creamy white to buff in colour. Historically it has been used in many significant buildings throughout the Scottish Central belt and further afield showing excellent weathering properties. It is suitable for most aspects of construction including load bearing masonry and cladding projects. With extensive reserves readily available, Darney sandstone is the stone of choice for both new build and conservation projects across Scotland and the North of England.

- ✓ Fine to medium grained
- ✓ Delicate tonal variation.
- ✓ Extensive reserves available
- ✓ Suitable for most aspects of construction including load bearing masonry and cladding.





m:



We are located near the Scottish / English border approximately half way between Berwick-upon-Tweed (A1) and Swinton on the B6461. Look out for our small red and white sign opposite West Fishwick Farm.

a:

Hutton Stone Co Ltd
Masons & Stone Merchants
West Fishwick
Berwick-upon-Tweed
Scottish Borders
TD15 1XQ

t:

Tel : (+44) 01289 386056
Fax : (+44) 01289 386151

i:

www.huttonstone.co.uk
info@huttonstone.co.uk

s:



#WEDIGSTONE